

J. T. LEACH & D. B. HISER.
Burial-Case.

No. 213,762.

Patented April 1, 1879.

FIG. 1.



FIG. 2.

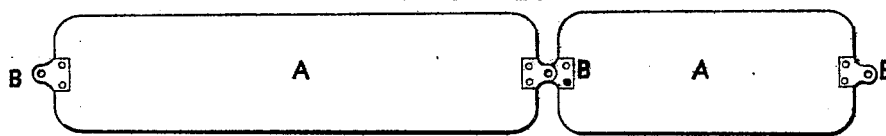


FIG. 3.

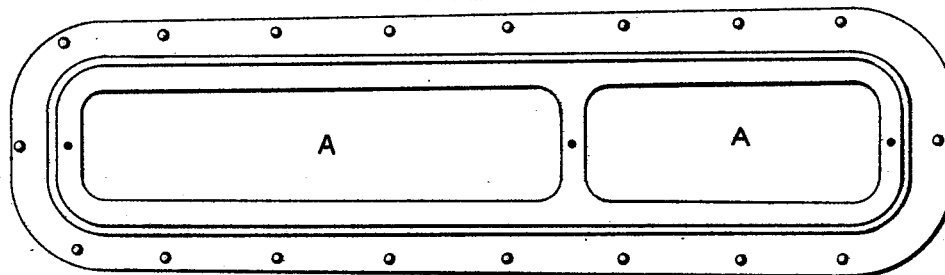
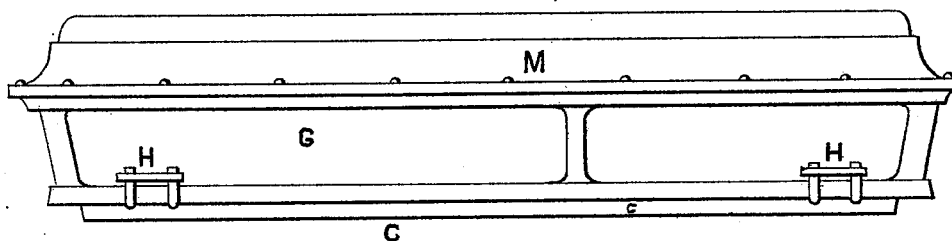


FIG. 4.



ATTEST.

W. C. Basworth
W. C. Christopher

INVENTORS

John T. Leach and
Daniel B. Hiser
Wm. Hubbell Fisher
Att'y.

J. T. LEACH & D. B. HISER.
Burial-Case.

No. 213,762.

Patented April 1, 1879.

FIG. 5

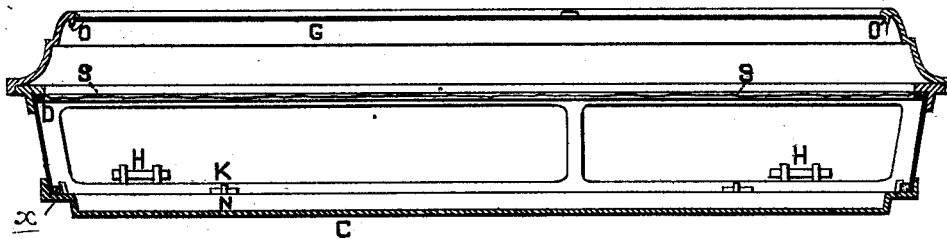
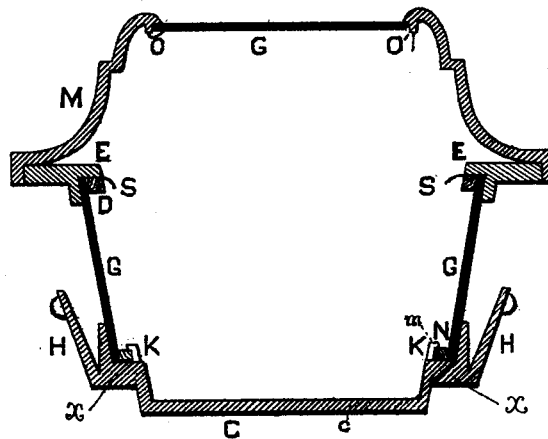


Fig 6



ATTEST.

W. S. Bowworth
W. S. Christopher

INVENTORS

John T. Leach and
Daniel B. Hiser per
Wm. Hubbell Fisher
Atty

UNITED STATES PATENT OFFICE.

JOHN T. LEACH AND DANIEL B. HISER, OF ORRVILLE, ASSIGNORS OF ONE-THIRD THEIR RIGHT TO JOHN K. McBRIDE, OF WOOSTER, OHIO.

IMPROVEMENT IN BURIAL-CASES.

Specification forming part of Letters Patent No. **213,762**, dated April 1, 1879; application filed March 8, 1878.

To all whom it may concern:

Be it known that we, JOHN T. LEACH and DANIEL B. HISER, residents of Orrville, county of Wayne, and State of Ohio, have invented certain new and useful Improvements in Burial-Cases, of which the following is a specification.

Our invention consists in the formation of the bottom and the handles in one piece by casting, thereby dispensing with the screws and the screw-holes necessary to connect the handles to the case, securing greater strength, preventing leakage into the case, and also incrustation.

The invention further consists in constructing the coffin as fully described hereinafter, to effectively secure the plates.

In the annexed drawings, Figure 1, Sheet 1, is a longitudinal vertical section of cover through the center. Fig. 2 is a top view of the cover. Fig. 3 is a top view of the case. Fig. 4 is a side elevation of the case. Fig. 5, Sheet 2, is a longitudinal vertical section of the case, taken at *x*, Fig. 6.

C, Figs. 4, 5, and 6, is the bottom or bed-plate of case, the portion *c* of said bottom being sunken, as shown.

Handles H, for lifting the case, are cast to the bottom. Keyways K are also cast to the bottom for the retention of the glass of the sides and ends. These handles and keyways being cast in one piece with the bed-plate, the necessity of attaching them thereto by screws and the weakening of the bottom consequent upon the drilling of holes are obviated, and no holes or spaces are opened for leakage or incrustation. The sunken center of the bed-plate, as shown, imparts greater strength to the plate and facilitates the placing of the casket in and the removing of it from the hearse by affording a flat grasp for the hand beneath the side. For this purpose an abrupt shoulder is made, leaving the flat face *x* beneath the sides or ends.

K K, Figs. 5 and 6, are keyways, cast in one piece with the bed-plate, the horizontal arm *m* of the keyway serving to retain in place the wooden or metallic key N, Fig. 6, which is inserted in the way, and holds the glass firmly and permanently in position.

D, Figs. 5 and 6, is a projecting strip of wood

attached to the projecting rim E of the top frame. This strip D presses tightly against the end and side glasses, G, and forms the means whereby they are held firmly in place. This strip D also serves for the attachment of the inside trimmings and upholsterings of the coffin, which may be tacked thereto without the drilling of holes for threads, thereby obviating the weakening of the rim. The strip also stiffens the rim and secures permanency in the hanging of the trimmings. When desired a flexible gasket or selvage, S, is placed between the rim E and strip D, and held in position by the pressure of the one against the other. The trimmings, linings, and upholsterings may be sewed to the selvage. We do not claim the flexible gasket as extended to attach coffin-trimmings, as this is not our invention.

O O', Figs. 5 and 6, are wrought-iron pins cast into the lid M of the case, and capable of being bent up under the top glass plates, thereby holding them firmly in position. These pins are easily adjusted, and render the setting of the glass a quick and simple operation.

A A, Figs. 1, 2, and 3, are the covers of the lid. These covers are provided at each end, on the under side, with a recess, into which is screwed a metal plate or tongue, B B. These plates extend beyond the ends of the covers, as shown in Figs. 1, 2, and 3. This extension is provided with an eye for the reception of a pin or screw hole. The adjacent two of these plates overlap one another, and the covers are secured to the lid by three screws—one at each end through the plates, and one in the middle through the overlapping plates, as shown. When the middle screw is extracted the two covers can be swung around laterally on the end screws, and when revolved back the insertion of the middle screw and a few turns of the screws completely tighten the covers. For the more perfect attachment of the top glass the aforementioned wrought-iron pins may be used with wooden wedges or keys.

The aforementioned method of securing the glass of the sides and ends by keyways and keys can be applied for the same purpose to the glass in the top without going beyond the scope of our invention. In like manner the method of securing the top glass by pins, or

by pins and wedges, may be applied for the same purpose to the sides and ends.

We do not here claim separate handles in connection with the shouldered recess, as this is the feature in a separate application for Letters Patent; but

We claim as new and desire to secure by Letters Patent—

1. As a new article of manufacture, the bed-plate C of a burial-case, provided with handles cast thereto, substantially as set forth, and for the purposes set forth.

2. A casket provided with keyways K, cast thereon, and with keys N, fitting between the keyways and glass plates, and securing the latter, substantially as set forth.

JOHN T. LEACH.
DANIEL B. HISER.

Attest:

C. C. PARSONS,
JOHN H. BROWN.